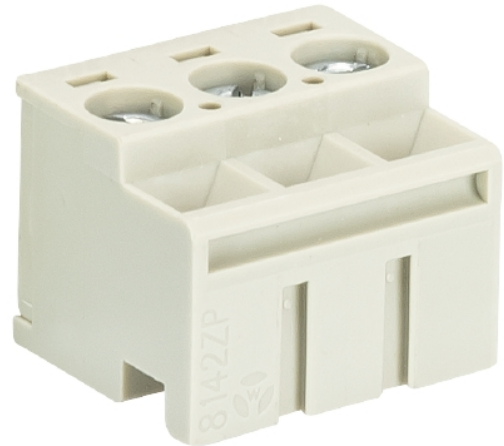


Data sheet

Commercial Art.No.: 25.617.0455.0

pluggable PCB Terminal 8142 ZP/4

Pluggable-PCB terminal with screw connection with rising cage clamp system, 4 poles, printed version, with insulating plate, max. cross section: 2.5 mm², pitch: 5 mm, type of packing: carton, color: grey



certificates / approvals



Technical data

general

modular spacing	5 mm
connection type	screw connection
soldering process	none
packaging	carton
number of poles	4
number of levels	1
integrated test socket	no
insulation plate	no
retaining pins	no
marking	yes
mating direction towards connector	90°

technical data

nominal cross section	2.5 mm ²
rated current	12 A
overvoltage category I	1000 V
overvoltage category II	600 V
overvoltage category III	250 V
rated impulse voltage	4 kV
wire strip length	6 mm

connection data

minimum cross section solid	0.14 mm ²
maximum cross section solid	2.5 mm ²
minimum cross section fine stranded	0.14 mm ²

maximum cross section fine stranded	2.5 mm ²
wire strip length	6 mm

technical data UL/CSA

cross section UL	26-14 AWG
voltage UL	300 V
current field wiring	12 A
current factory wiring	12 A
cross section CSA	26-14 AWG
voltage CSA	300 V
current CSA	12 A

other

type of insulation material	thermoplastic
color	grey
height	11.6 mm
length	20 mm
depth	12.95 mm
material attachment screw	steel
material contact base	CuZn
material contact surface	Sn
tightening torque note	recommended tightening torque 0.3 - 0.4 Nm
tightening moment	0.5 Nm

note

note	maximum conductor cross section (flex., stranded) with ferrule 2.5 mm ²
------	------------------------------------------------------------------------------------

classification

ECLASS 11	
ECLASS 8.1	27440402
ETIM 9.0	
ETIM 8.0	
ETIM 7.0	
ETIM 6.0	EC002638
ETIM 5.0	EC002638
ETIM 4.0	EC002638

product compliance

ROHS conformity status	compliant/exempted
ROHS exceptions	III-6(c)
REACH-SVHC conformity status	Duty-To-Declare
REACH-SVHC substances	Lead
REACH-SVHC CAS numbers	7439-92-1